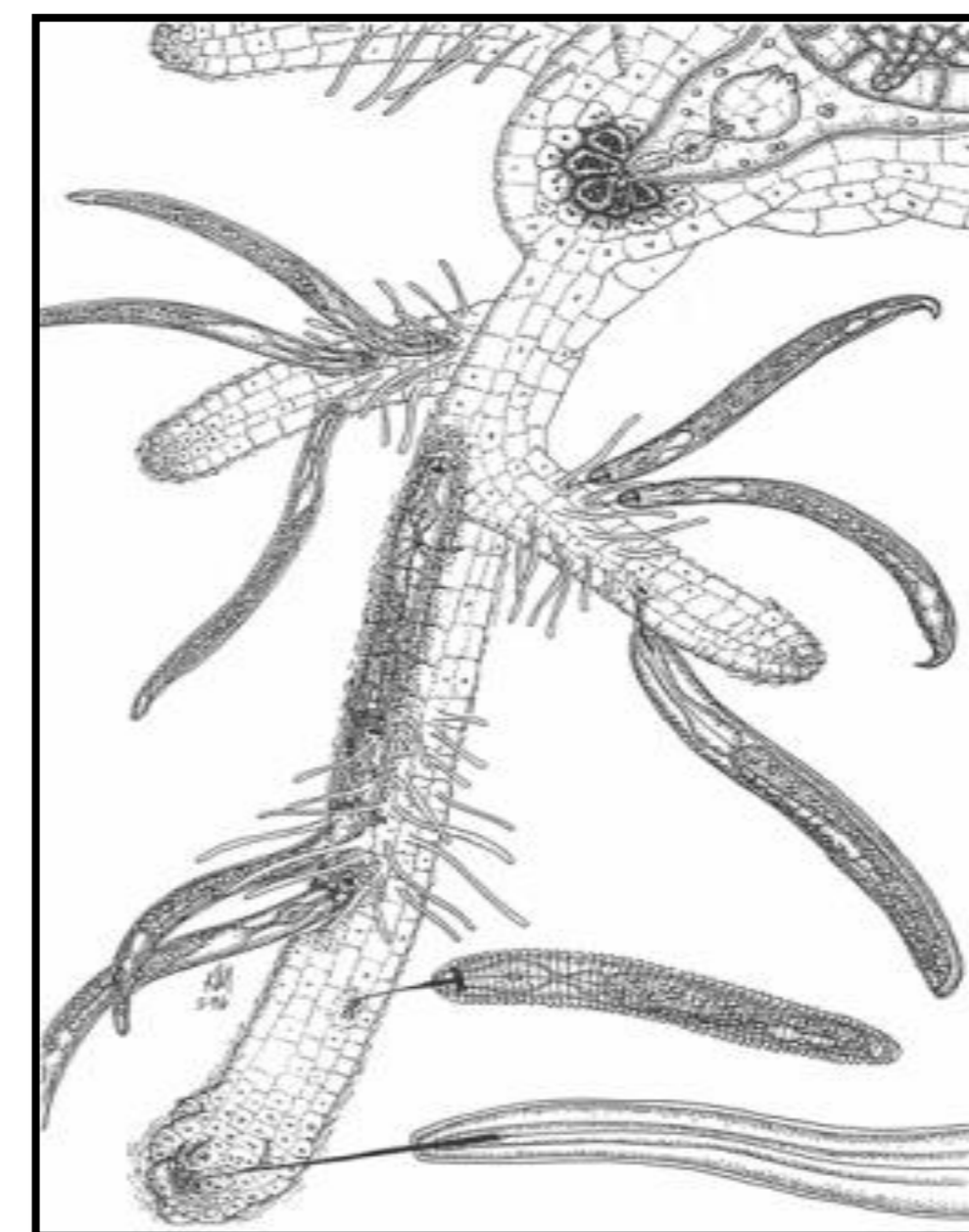
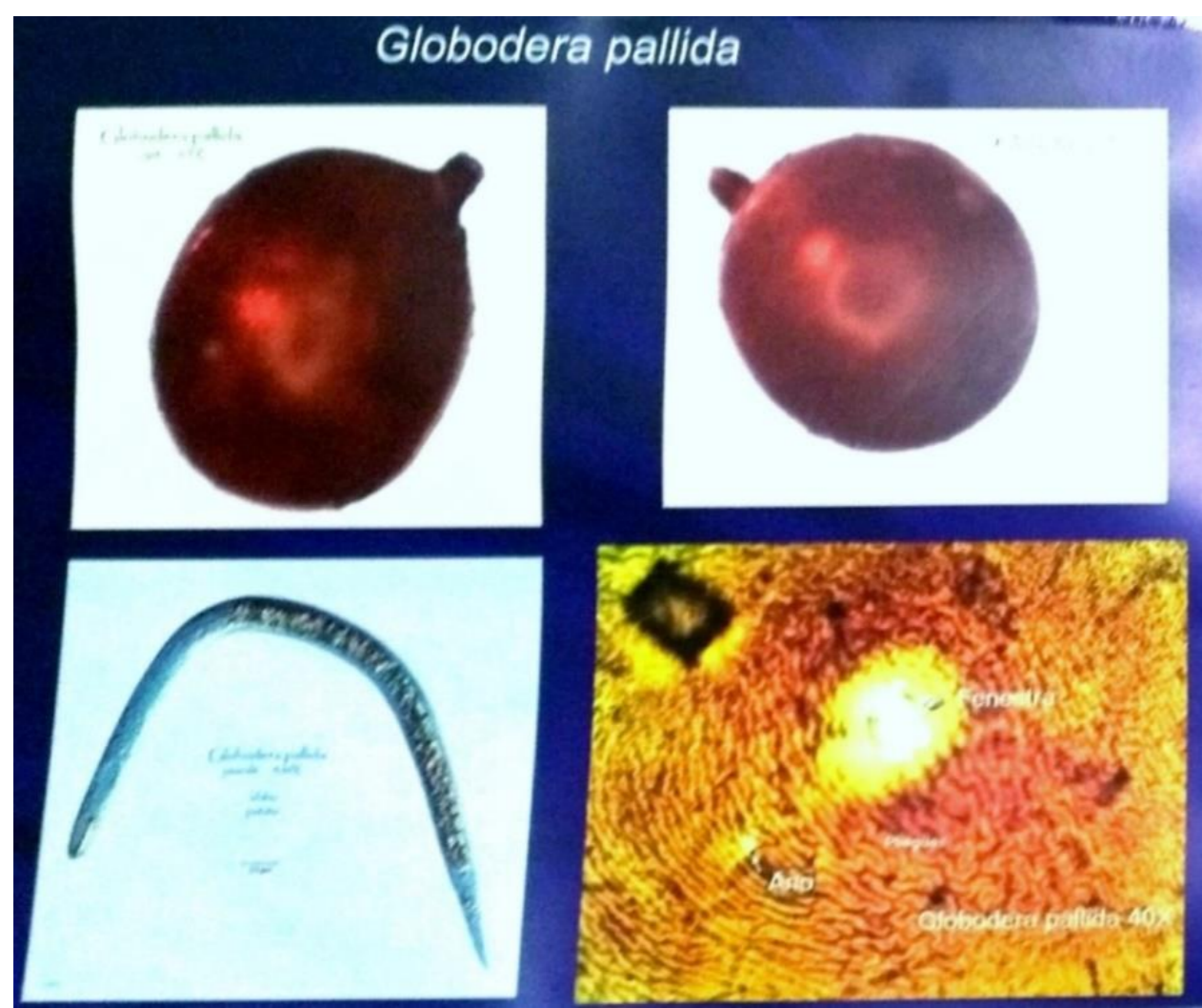


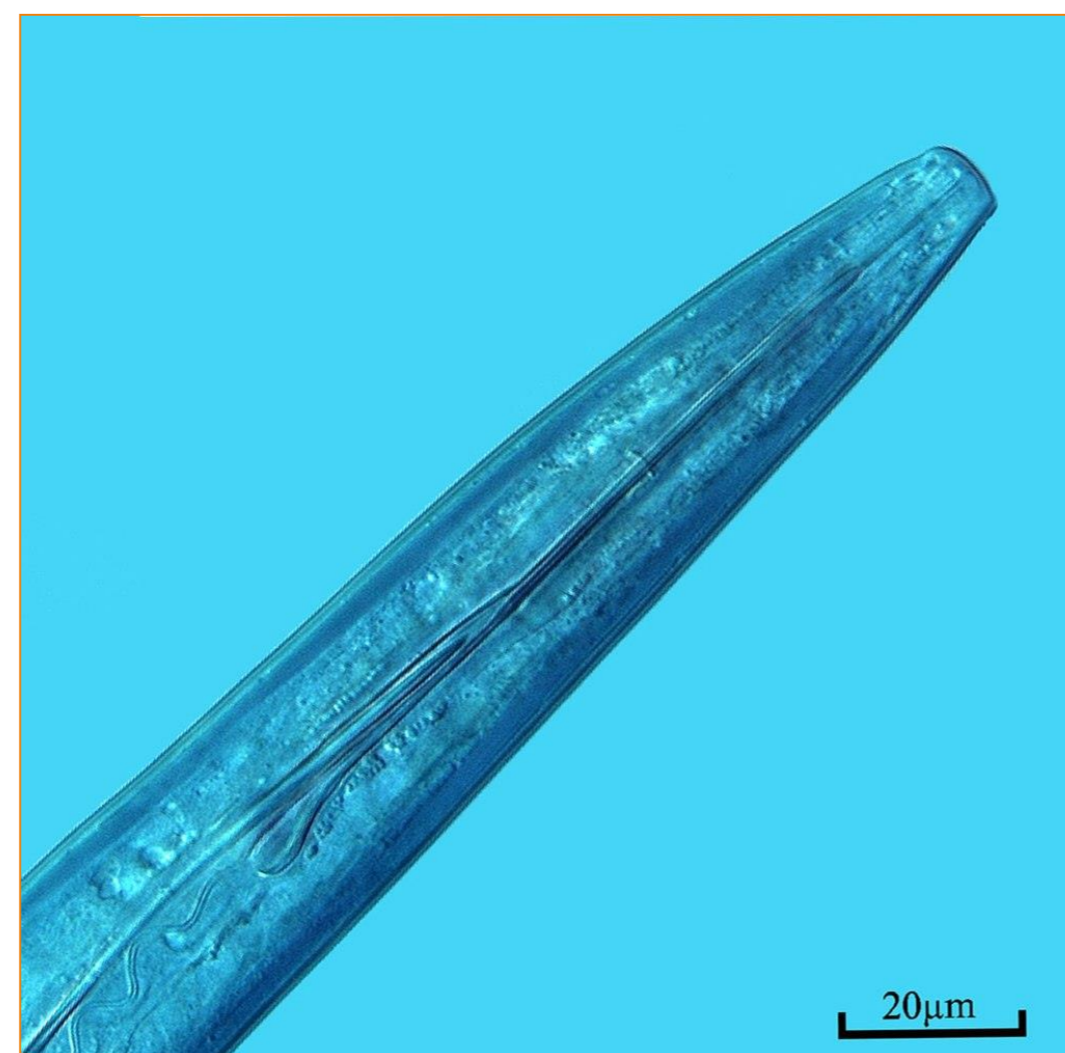
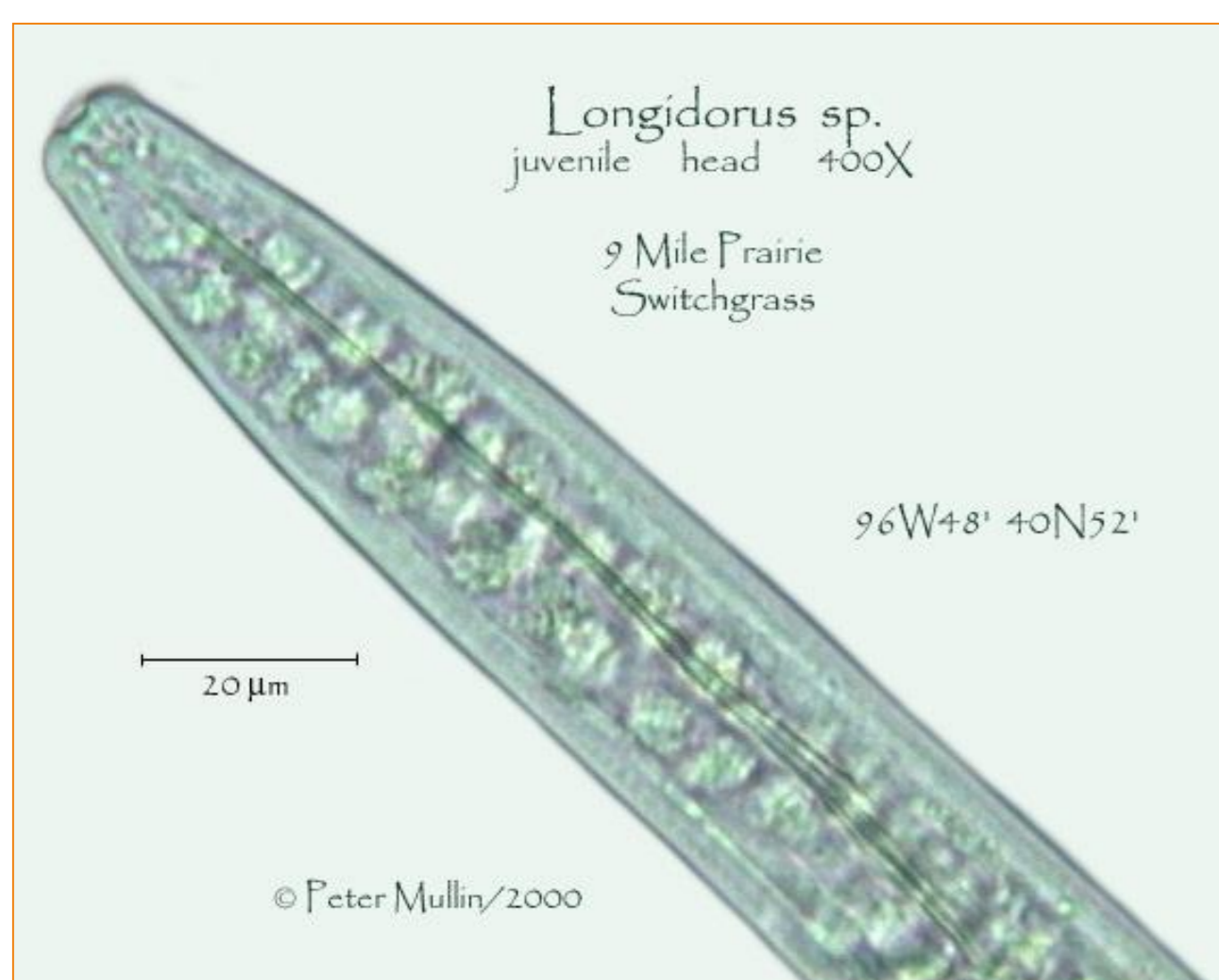
Servicio e Investigación en Nematología Agrícola

Diagnóstico de los principales nematodos fitoparásitos

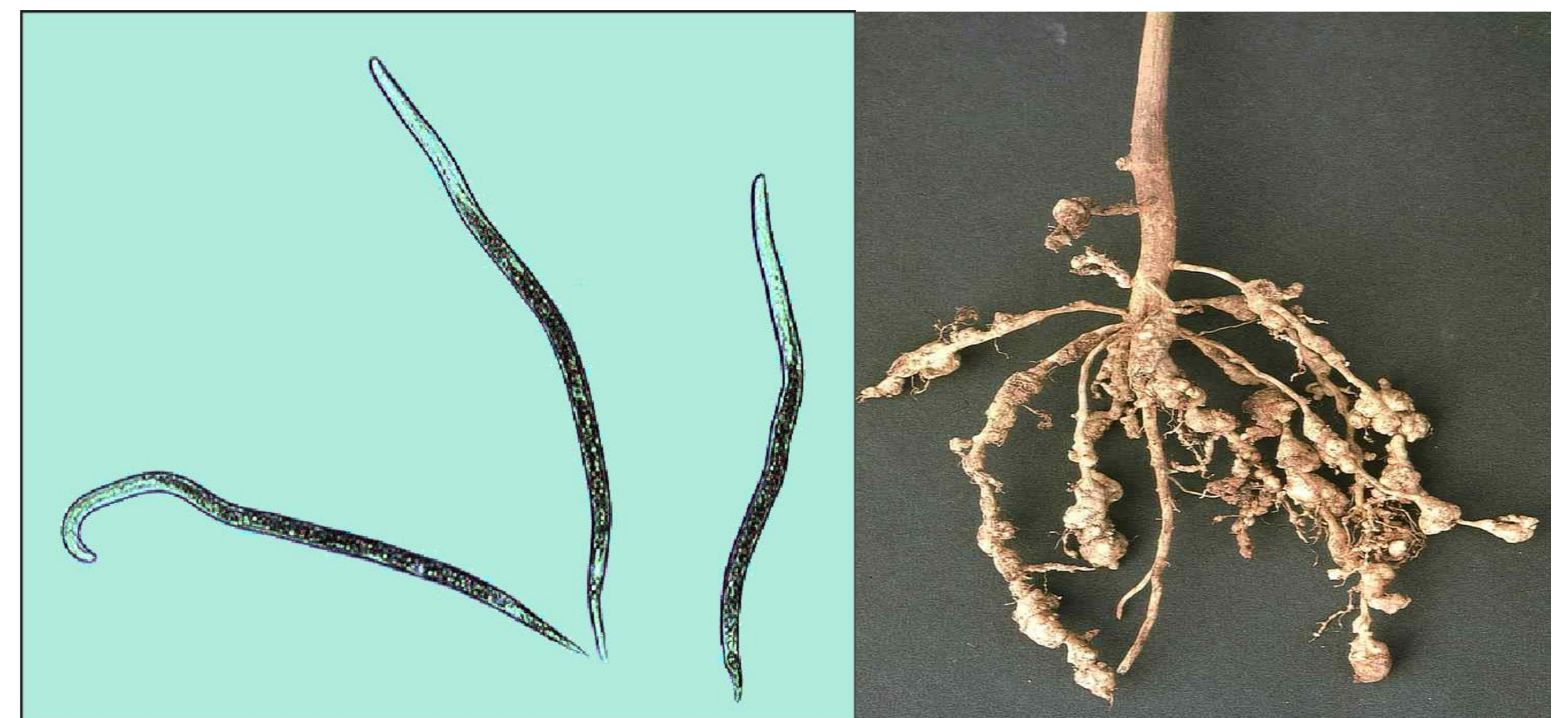
Extracción e identificación de quistes de *Globodera* spp. *Meloidoyne* sp. *Pratylenchus* sp. *Radopholus* sp. *Hemicycliophora* sp. *Criconemella* sp. *Trichodorus* sp. *Longidorus* sp. *Xiphinema* sp. *Aphelenchoides* sp. *Rotylenchus* sp. *Helicotylenchus* sp. y *Tylenchulus* sp.



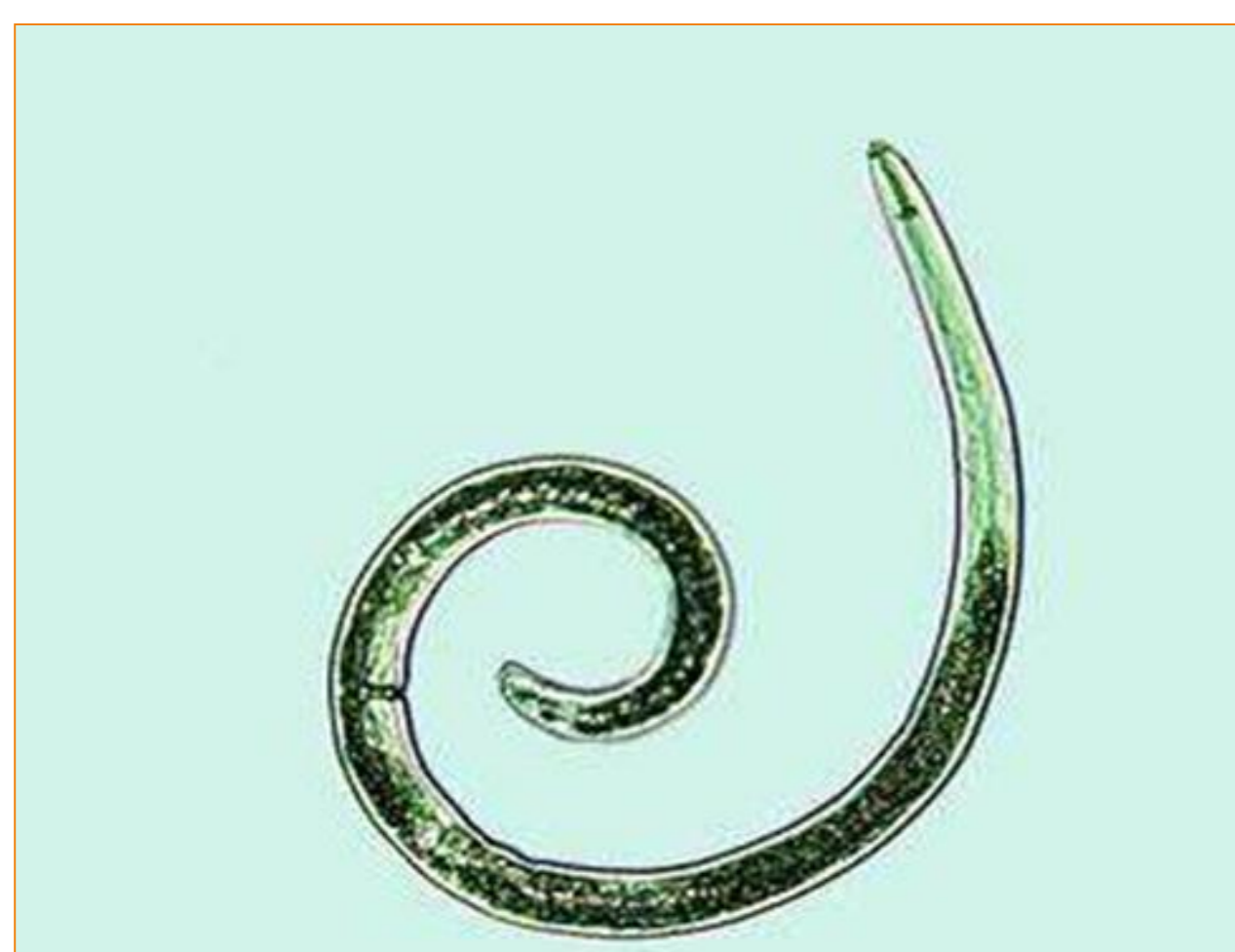
Criconemella sp.



Xiphinema sp.



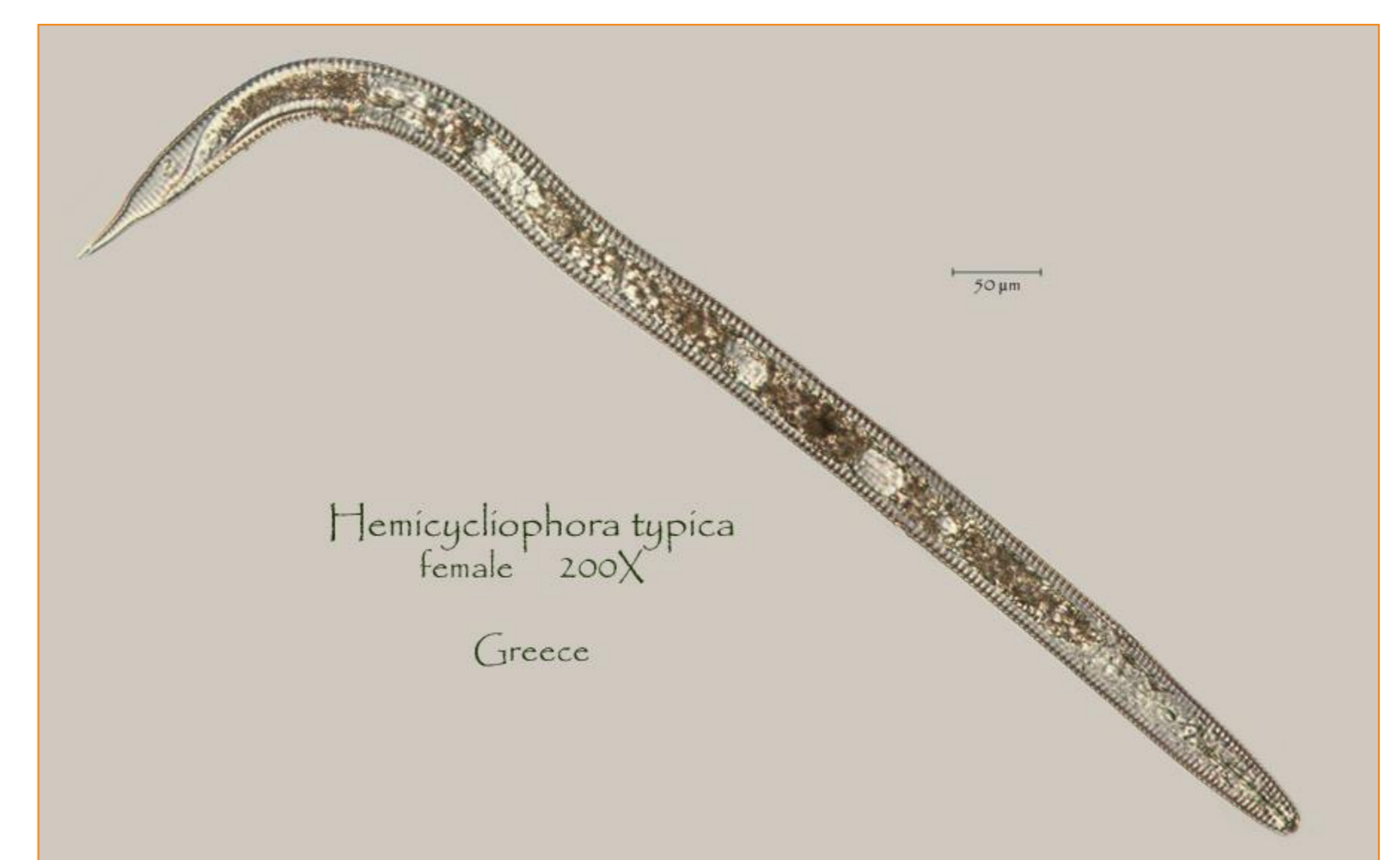
Meloidoyne sp.



Helicotylenchus sp.



Radopholus similis



Pratylenchus sp.

Contacto: Laboratorio de Servicios de Fitoprotección del INTA.
Coordinador: Ing. Luis Vargas Cartagena MSc.
Responsable: Ing. Ricardo Piedra Naranjo Ph.D.
Correo: rpiedra@inta.go.cr
Tel: 2231-5055